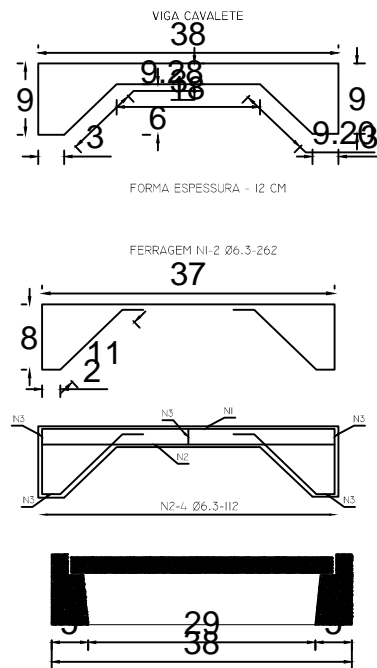
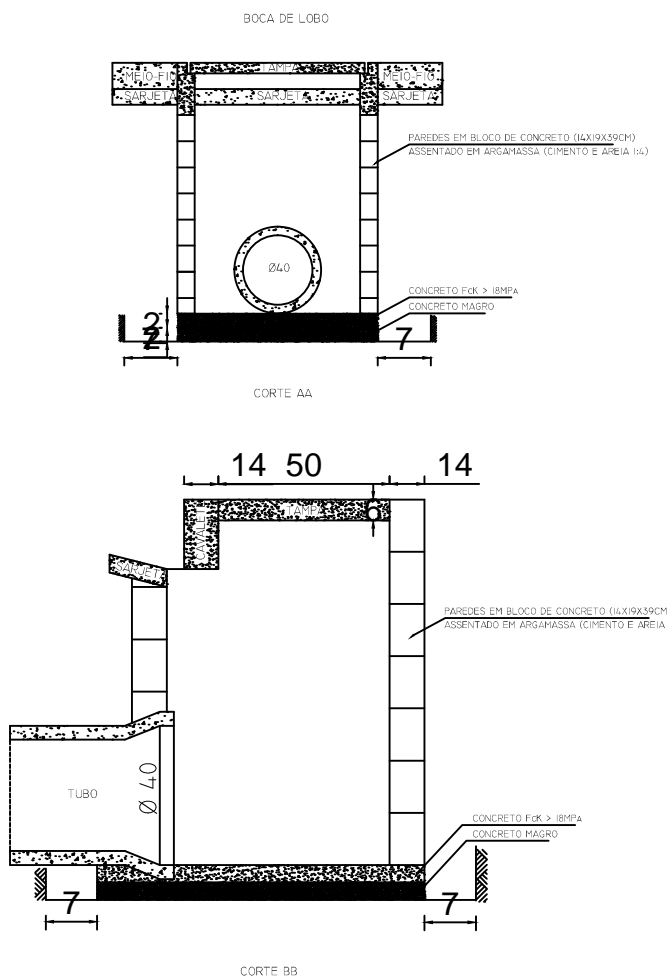
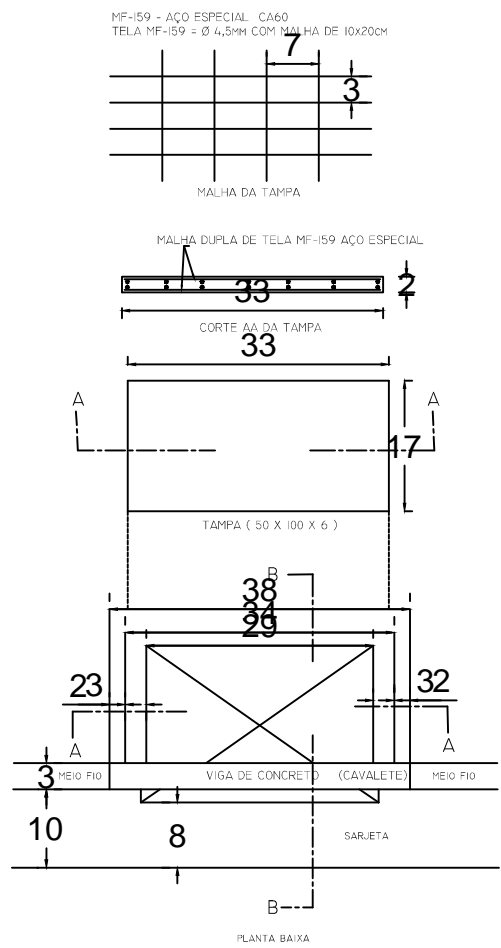
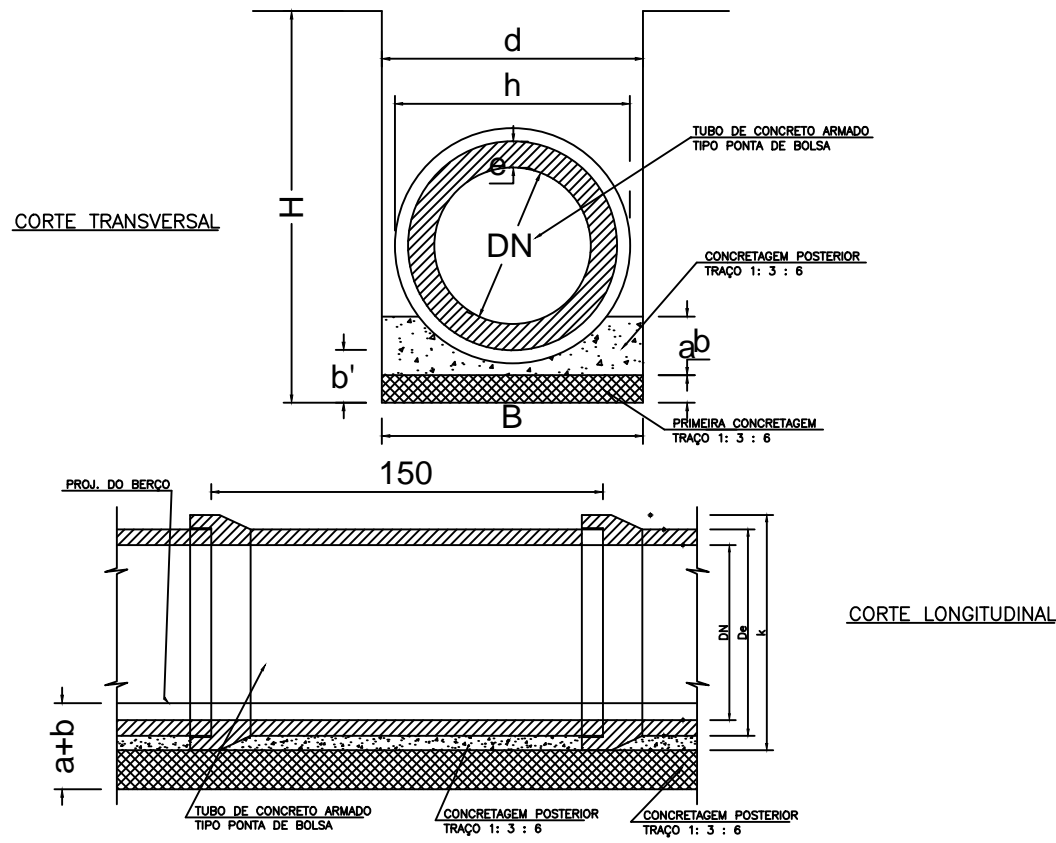


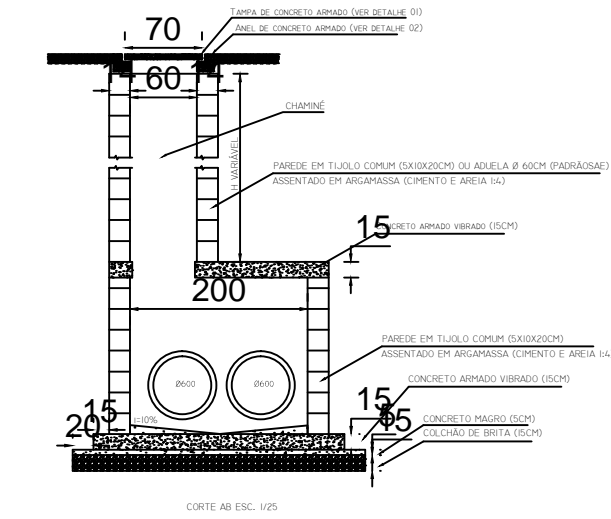
DETALHAMENTO BOCA DE LOBO



REDES TUBULARES DE CONCRETO



DETALHAMENTO POÇO DE VISITA PARA REDE DE 1200MM



- POÇO DE VISITA EM BLOCO DE CONCRETO (CAVALETE) PARA SAÍDA EM TUBO Ø 60 E 80 CM (CONCRETO DO BLOCO Ø40-20 MPa);
- DIMENSÕES INTERNAS DA CAIXA: 120 X 120 CM.

LISTA DE FERROS				
POSICAO	QUANT.	#	UNID(M)	TOTAL
N1	26	Ø 6	193	5.018,00
N2	6	Ø 10	193	1.158,00
N3	8	Ø 8	VAR.	1.750,00
N4	10	Ø 8	VAR.	800,00
N5	14	Ø 8	VAR.	1.120,00
TOTAL: R\$ 9.646,00				

LISTA DE FERROS				
#	COMP(M)	PES(KG)	#	COMP(M)
Ø 6	19,648	0,648	76,62	
Ø 8	1,158	0,648		
TOTAL: PES(10KG)		95,41		
CONCRETO FCK >= 20 MPa				